



## *Welcome to our Fall 2020 Newsletter*

---

### *About the Leir Research Institute*

The Henry J. and Erna D. Leir Research Institute for Business, Technology, and Society (LRI) creates value by integrating research and education to support economic and policy impacts that foster sustainable economic development, addressing critical global challenges to corporate and business continuity and growth.

[Read More](#)

### *About our Business Data Science Ph.D. Program*

Launched in Fall 2016, the Ph.D. program in Business Data Science at Martin Tuchman School of Management is a cutting-edge interdisciplinary program and a pioneer that integrates data science with business disciplines. In August 2020...

[Read More](#)

### *About our Healthcare Research*

Yi Chen, Henry J. Leir Chair in Healthcare and Professor in Business Data Science in Martin Tuchman School of Management, is conducting research to analyze the needs and to provide assistance to patients in Online Health Communities (OHC) using advanced machine learning technologies, funded by the Leir Foundation and the National Institutes of Health (NIH).

[Read More](#)

---

### *2020 Research and Grant Update*

In 2020, the MTSM faculty published 36 articles in academic journals, out of which 29 articles appeared (or to appear) in A\* or A ranked journals, 7 articles appeared (or to appear) in B-ranked journals (Australian Business Deans Council Journal List).

[Read More](#)

---

### *Spring 2021 Seminar Series*

## LEIR VIRTUAL RESEARCH SEMINAR SERIES

SPRING 2021

The Henry J. and Erna D. Leir Research Institute for Business, Technology, and Society (LRI) creates value by integrating research and education to support economic and policy impacts that foster sustainable economic development, addressing critical global challenges to corporate and business continuity and growth.

The LRI operates in support of the NJIT 2025 four pillars: Diversity, Sustainability, Recognition, and Transformation. In coordination with the NJIT 2025 strategic plan, the LRI seeks to 1) promote collaborative research, 2) foster innovation and entrepreneurship, and 3) promote partnerships.

The Leir Virtual Seminar Series is intended to build upon and leverage decades of NJIT experience and intellectual capital in the fields of sustainability and industrial ecology, environmental science, operations management and decision analytics, organizational behavior, and business data science.

For a complete list of speakers and topics, please visit [centers.njit.edu/leir/spring21-seminars](https://centers.njit.edu/leir/spring21-seminars)

### DATES

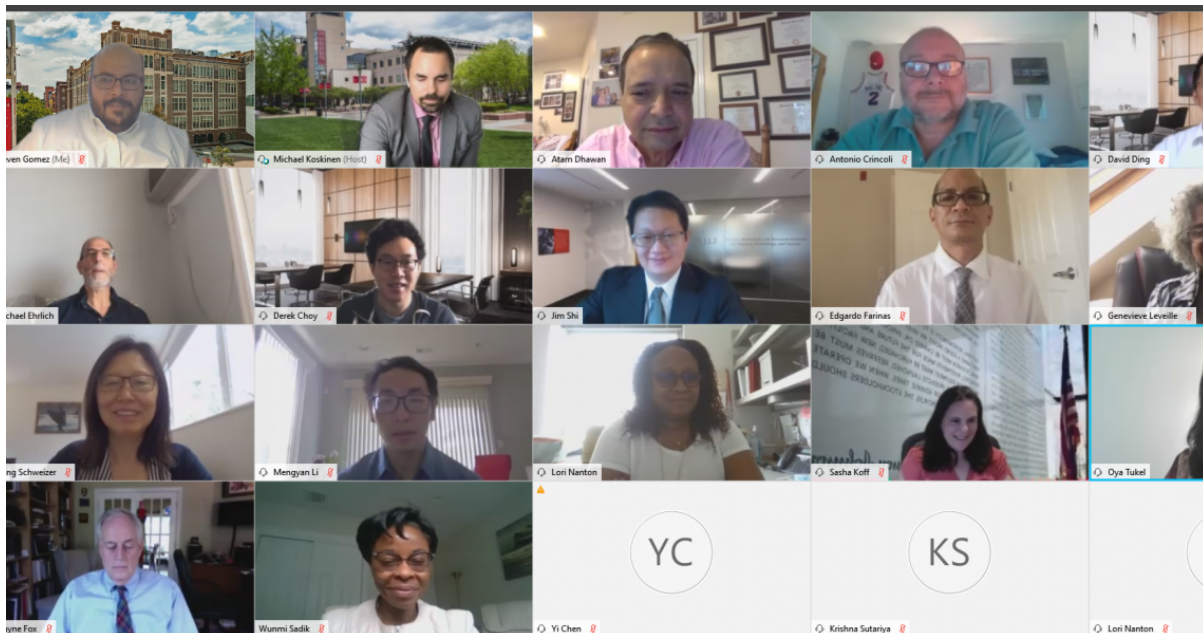
|                   |                |
|-------------------|----------------|
| January 27, 2021  | March 24, 2021 |
| February 3, 2021  | March 31, 2021 |
| February 10, 2021 | April 7, 2021  |
| February 17, 2021 | April 14, 2021 |
| February 24, 2021 | April 21, 2021 |
| March 3, 2021     | April 28, 2021 |
| March 10, 2021    |                |

For More Information, Contact:

**Raja Roy, Assistant Professor, Martin Tuchman School of Management, NJIT**  
rroy@njit.edu

For more details, click to navigate to our website.

## Leir Research Institute Conference 2020



On Friday, August 14, 2020, the Leir Research Institute at the Martin Tuchman School of Management hosted its annual conference titled “Disruptive Technologies, Regulations, Business - Implications in the BioTech Industry,” where academics, students, and industry professionals gathered to explore disruptive technologies and business solutions to address the prevailing health and societal issues of the day.

[Read Full Article](#)

---

## *Meet the Director*

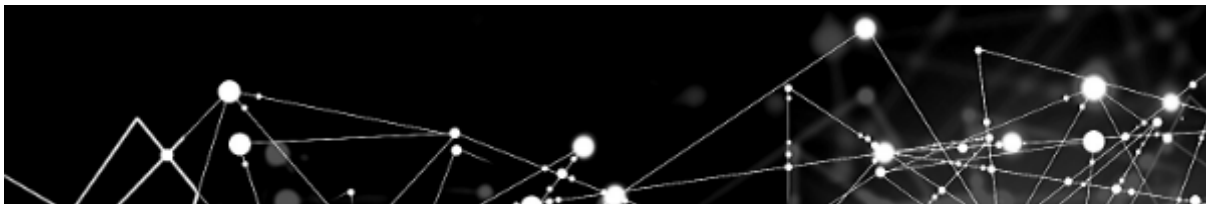
### **Michael Ehrlich**

Associate Professor Michael Ehrlich, PhD, the newly appointed Director of the Henry J and Erna D Leir Research Institute for Business, Technology, and Society (LRI), had an international Wall Street career before joining NJIT’s Martin Tuchman School of Management. Upon leaving Wall Street, Ehrlich started a small technology company that he sold in 2007.



[Read More](#)

---





---

*Copyright © 2020 Leir Research Institute, All rights reserved.*

Want to change how you receive these emails?  
You can update your preferences or unsubscribe from this list.