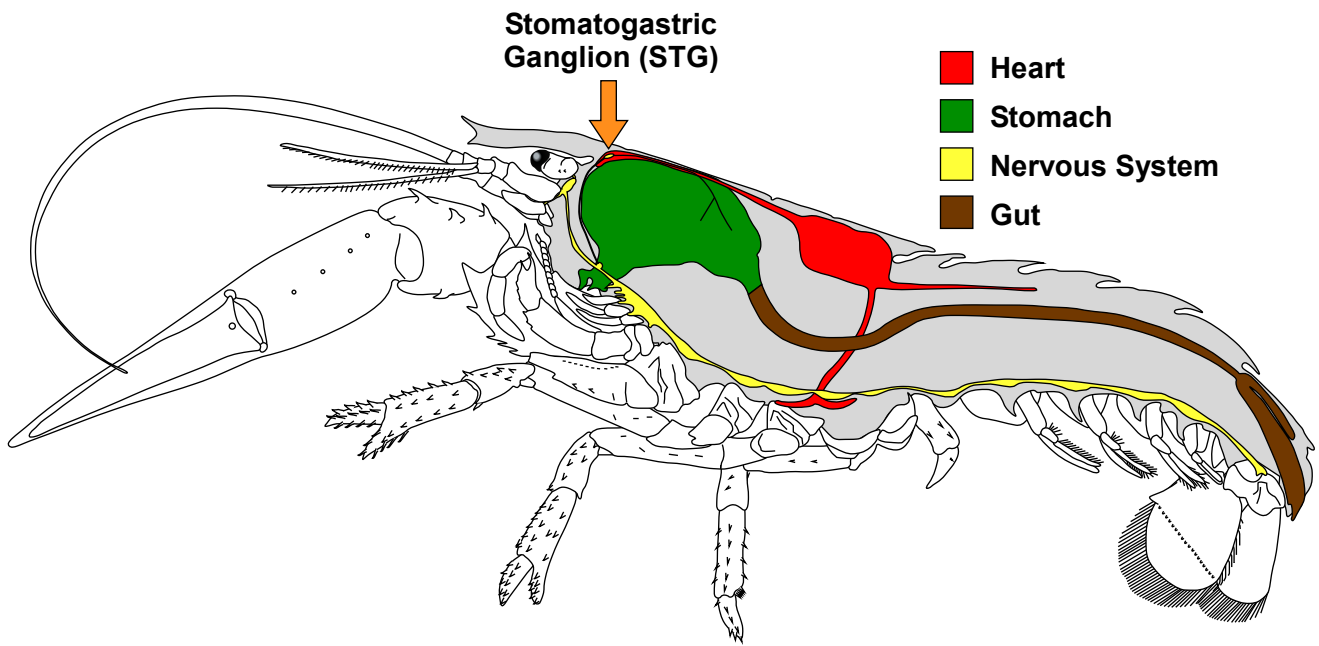
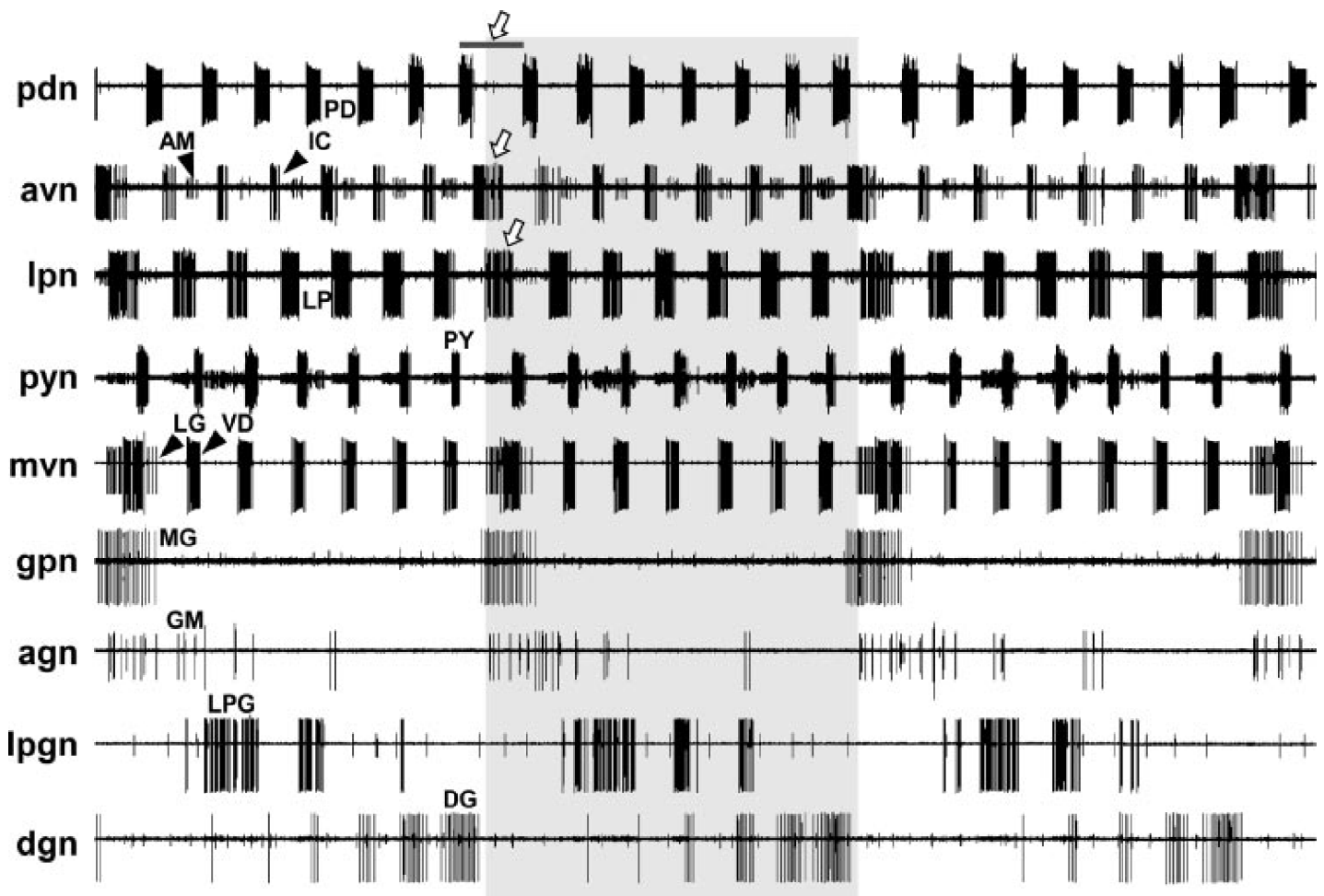
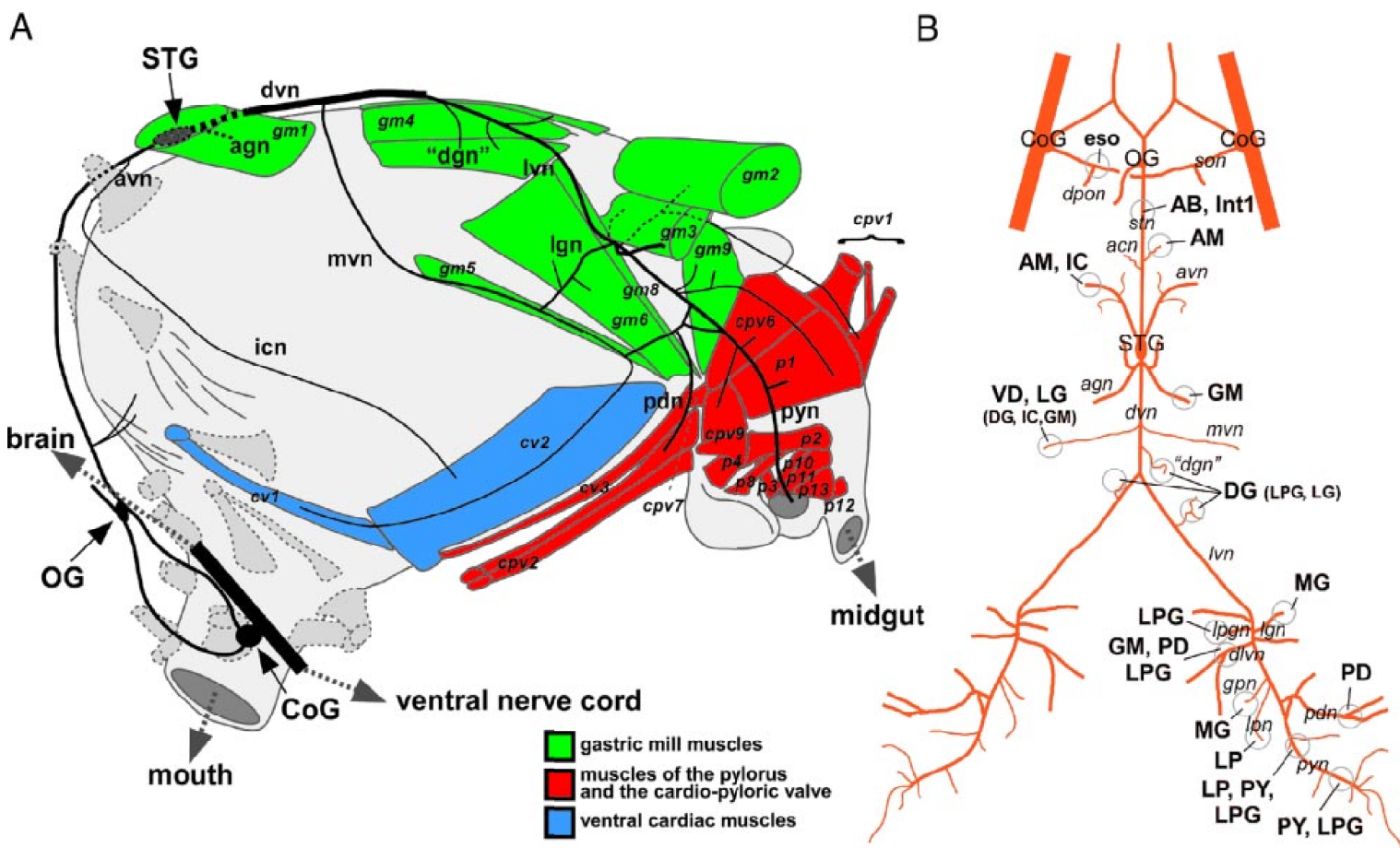


The **Homarus americanus** STG Guide

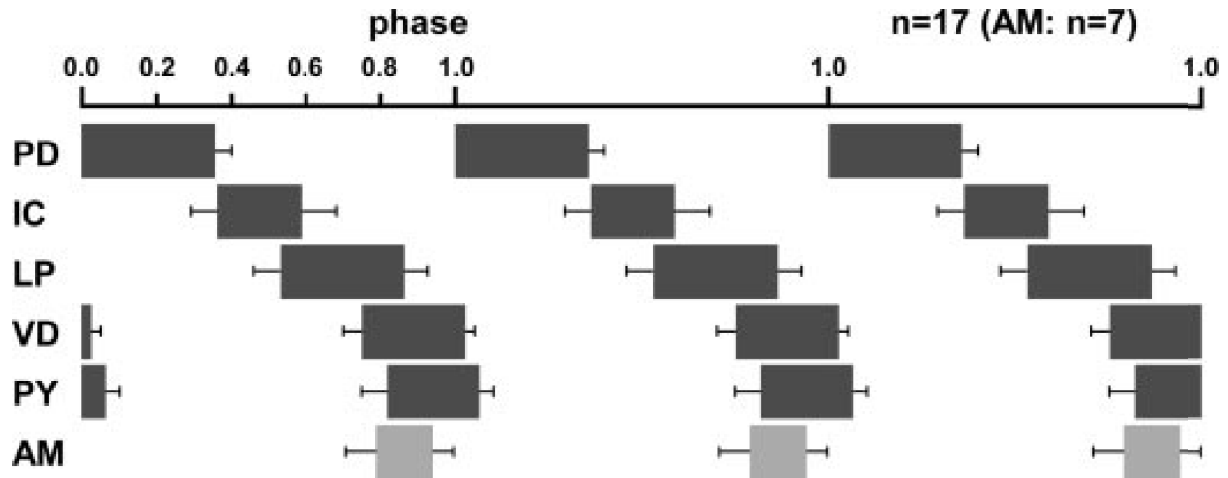


Bucher Lab

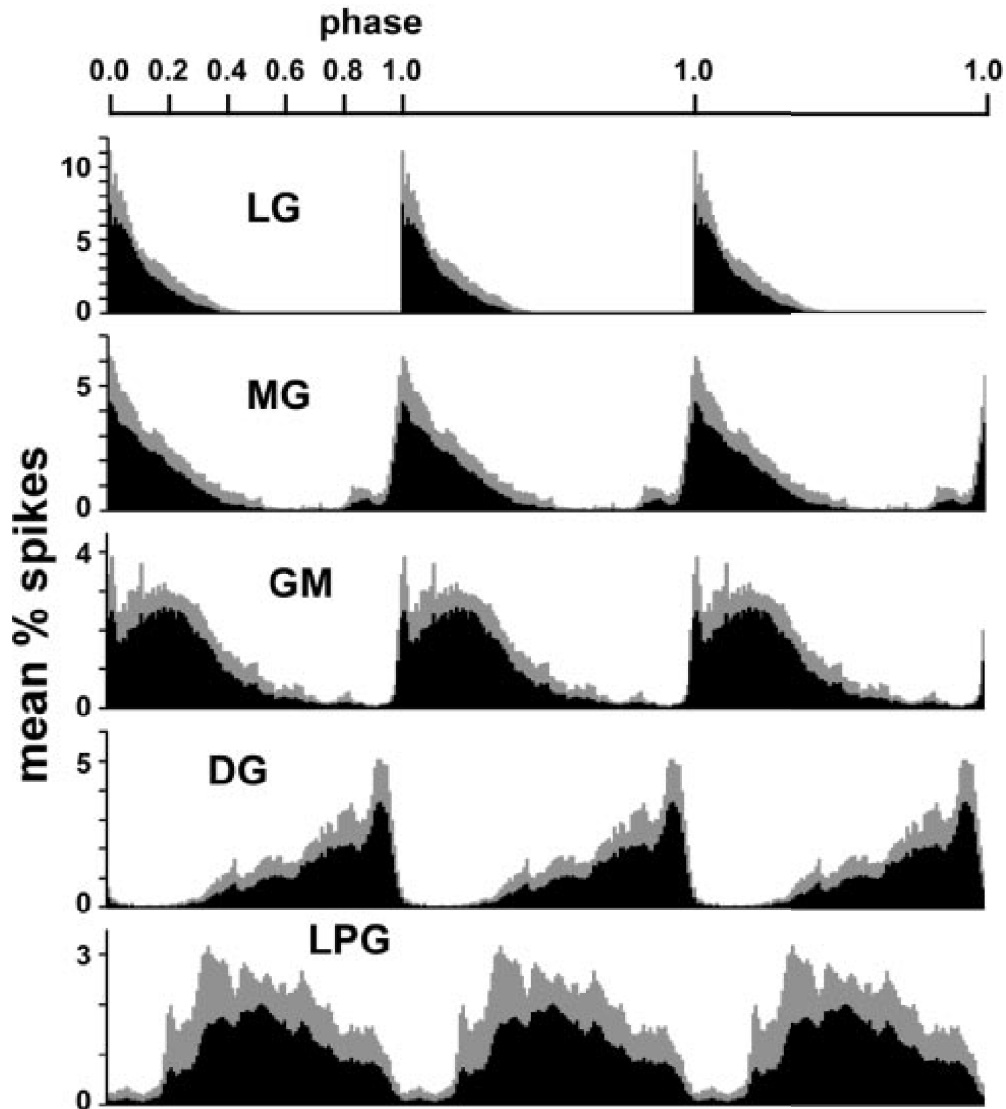


2s

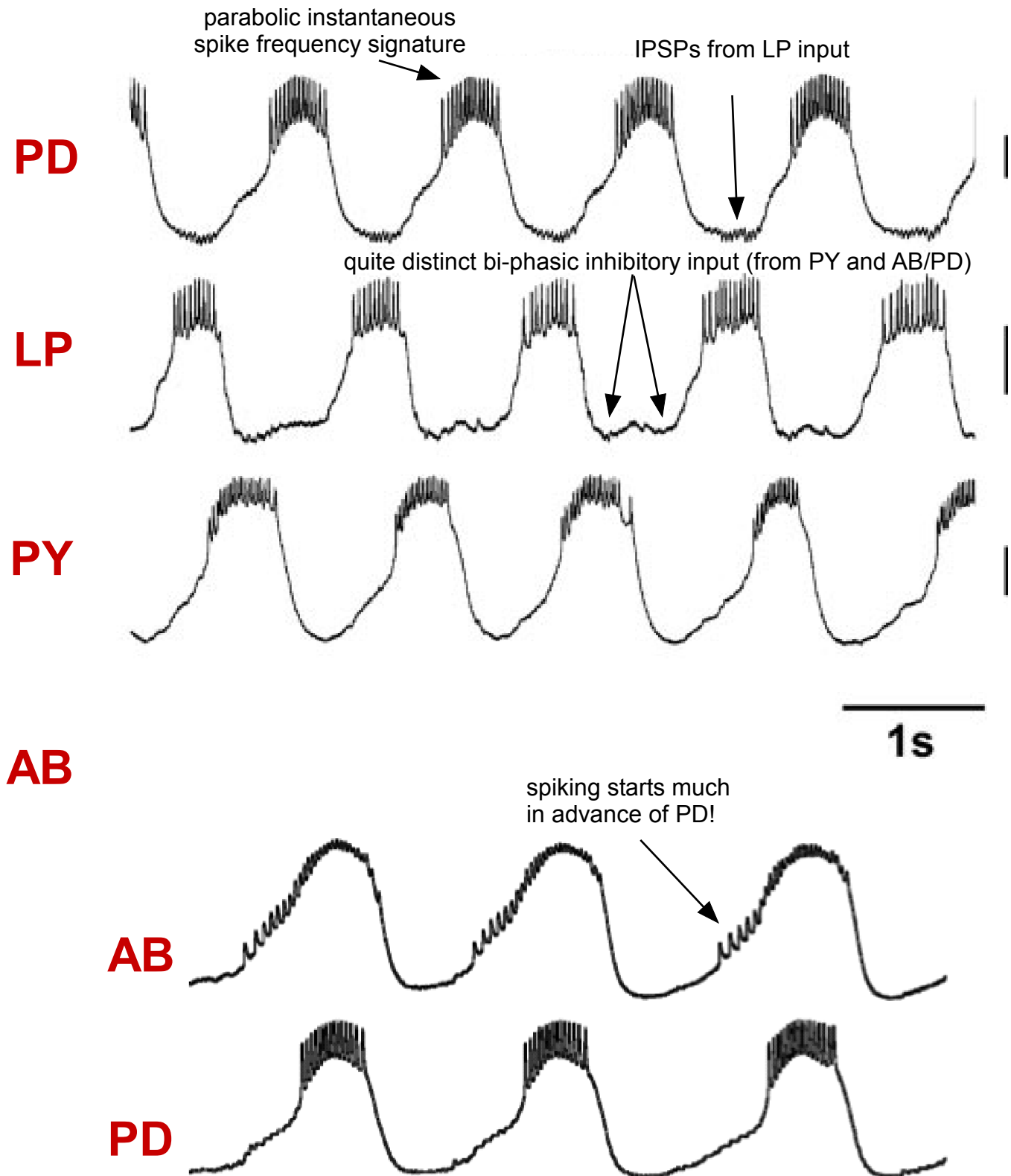
pyloric phase relationships

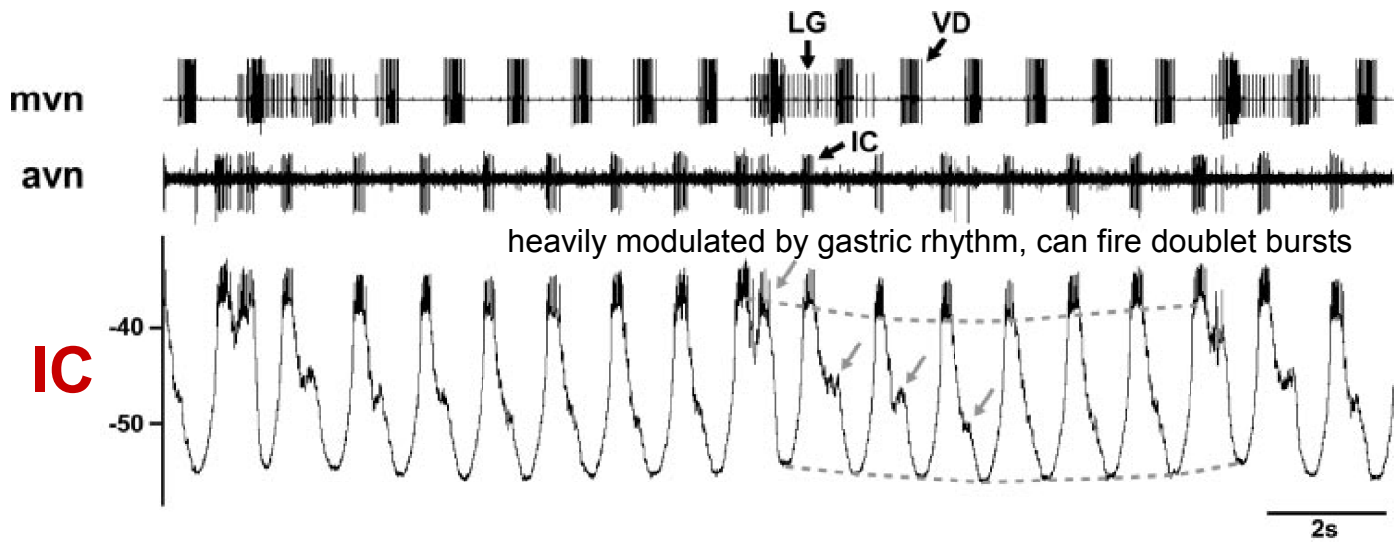


gastric mill phase relationships

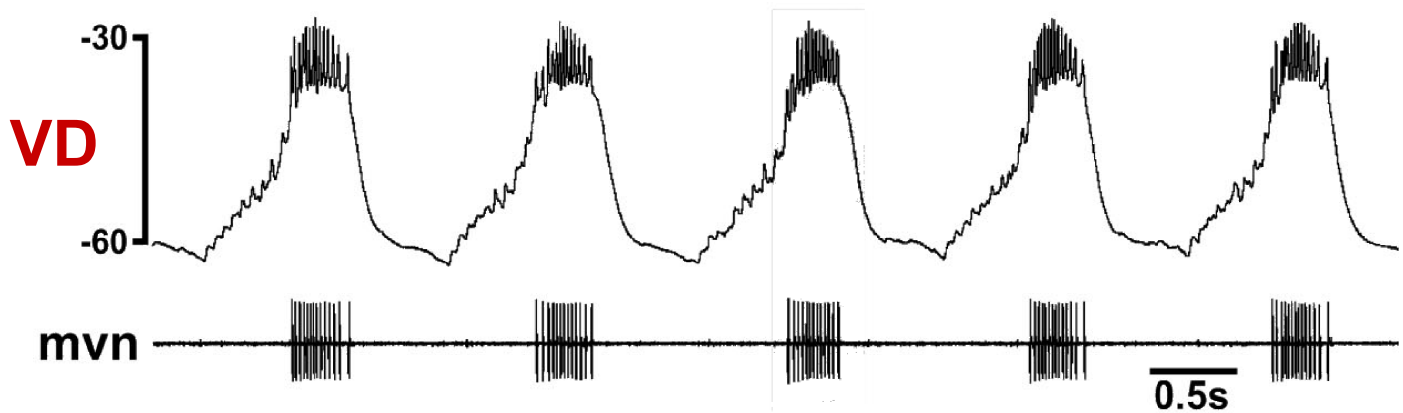


Pyloric Neurons

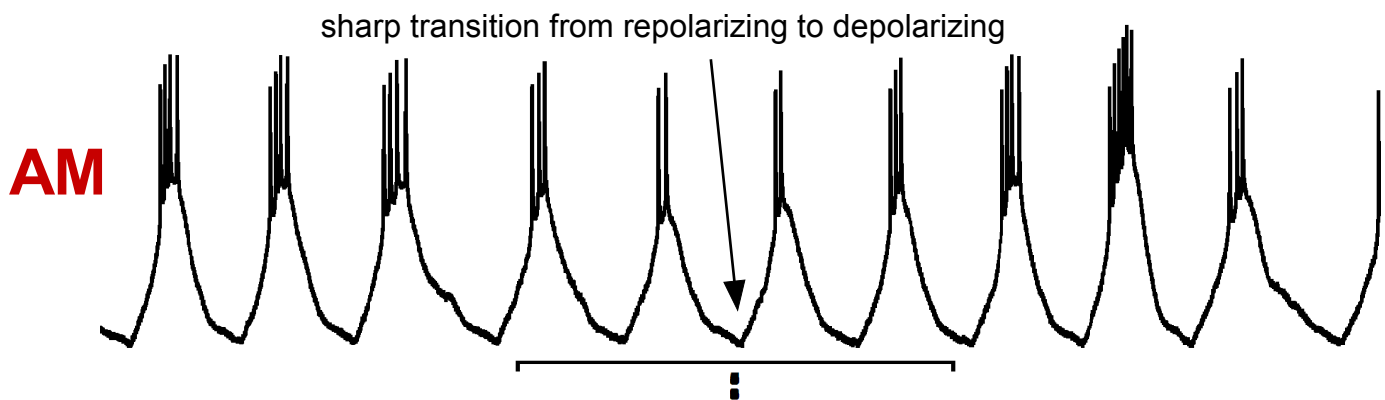




VD has separate left and right spike initiation zones. spikes are not synchronous and summate with offset in the soma, which leads to "scraggly" spike shape

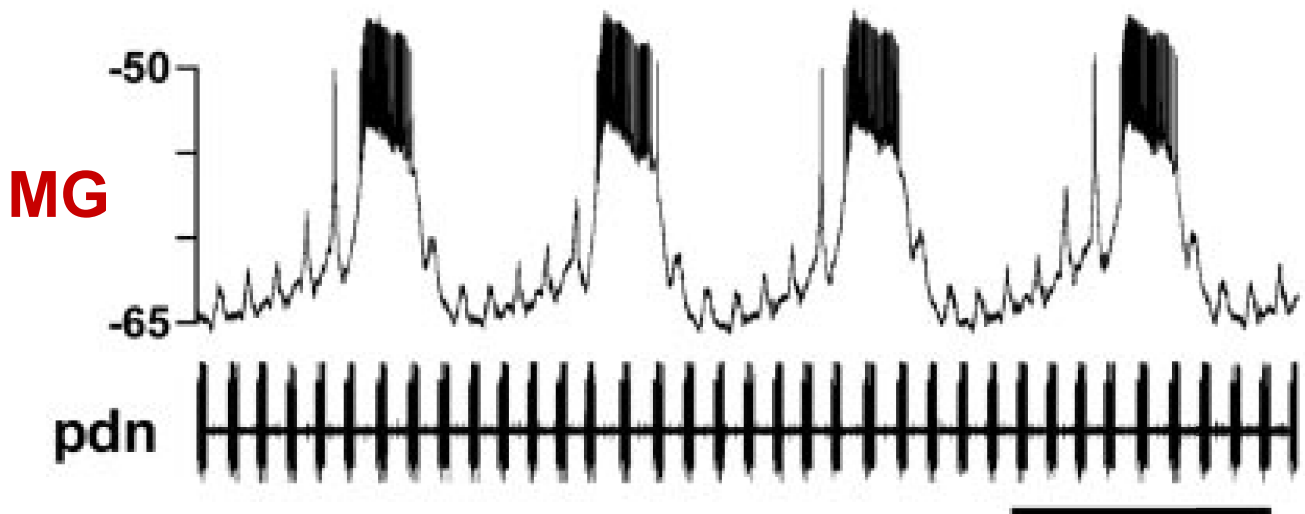
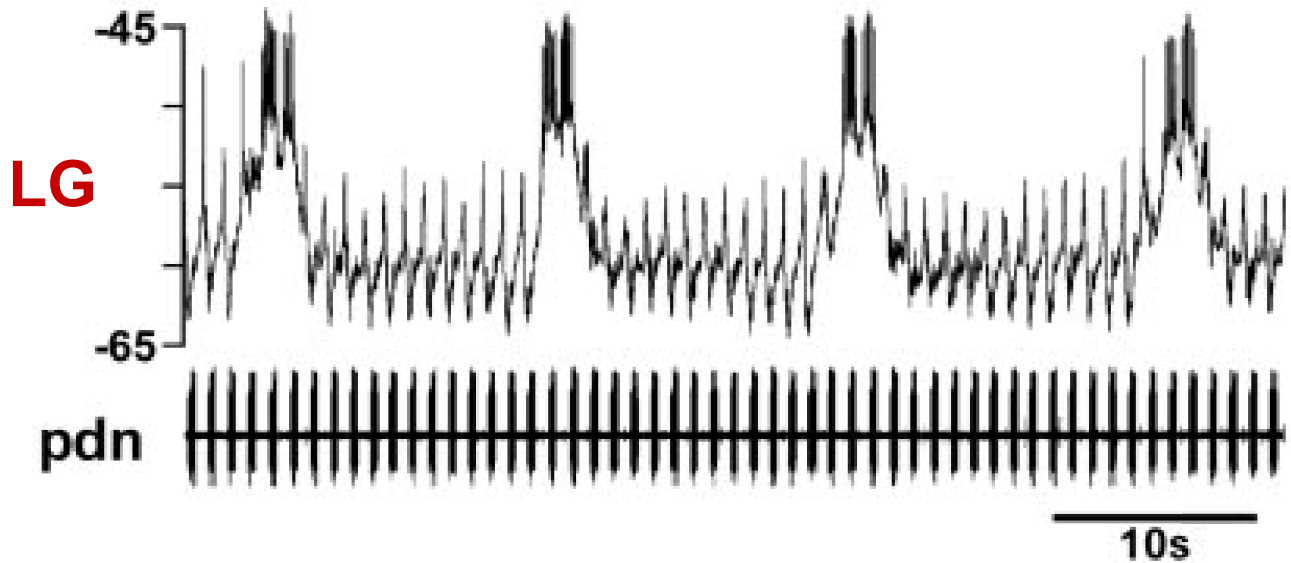


AM is not a pyloric neuron but innervates cardiac sac muscles. Nevertheless, in the Homarus isolated STG it invariably fires with PY timing:

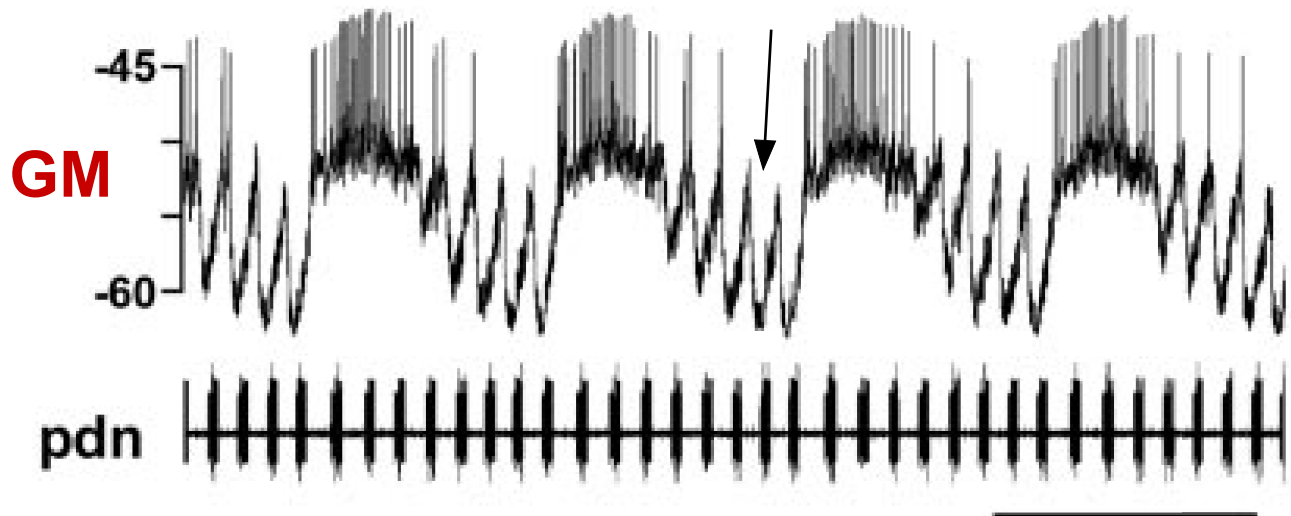


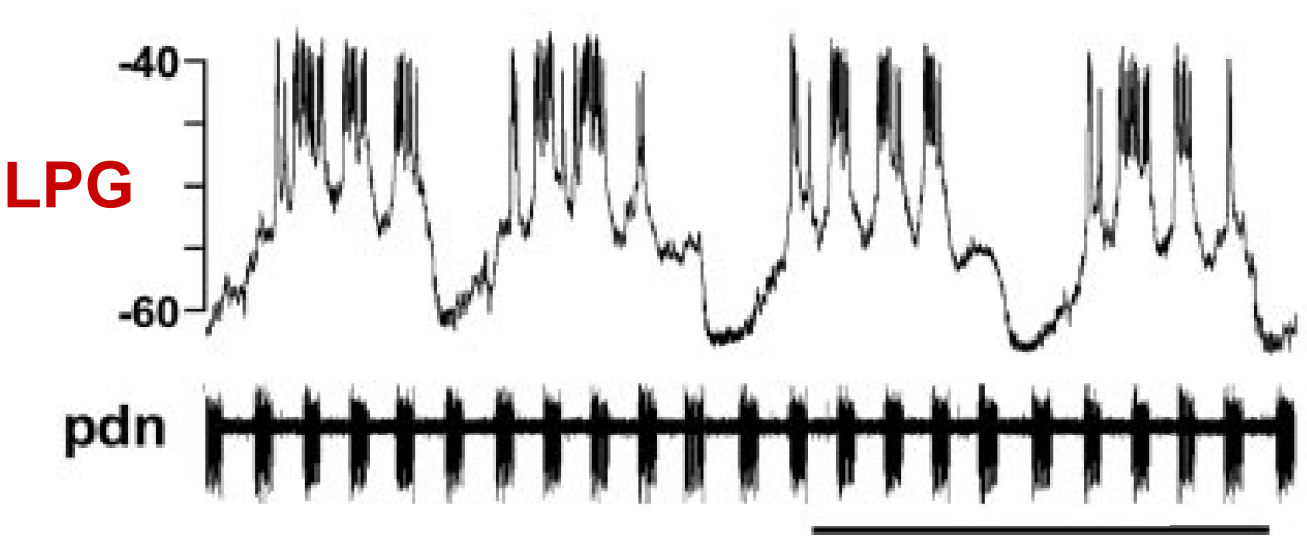
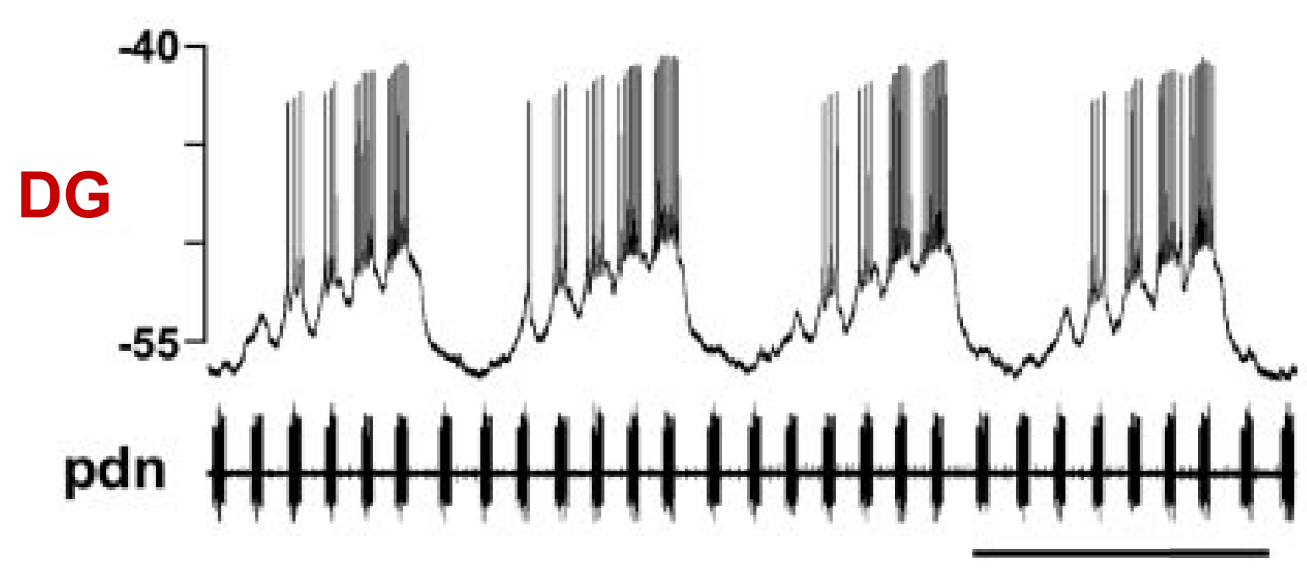
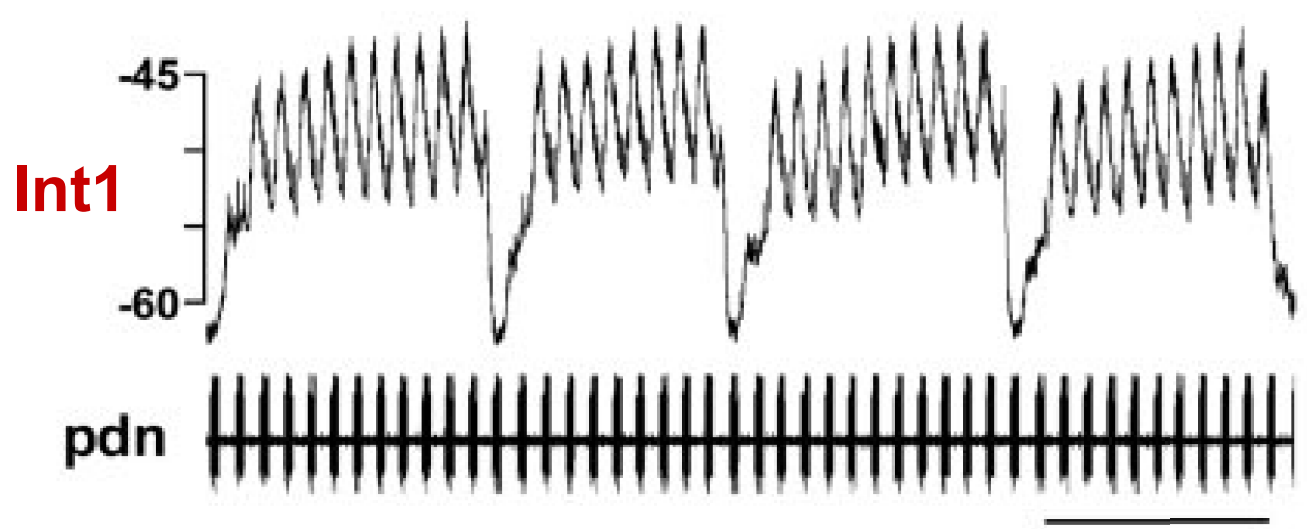
Gastric Mill Neurons

(during ongoing gastric mill rhythms)



barrages of clearly distinguishable EPSPs





“other cells”

The Homarus STG contains (apart from AM) 6 other cells that are not gastric mill or pyloric neurons. These are either completely flatlined or get barrages of inhibitory potentials in timing with the esophageal rhythm

